

Intrinsically Safe Permissible Dual-Light™ Flashlight w/Dual Magnets

Flashlight



Floodlight



Dual-Light



TECHNOLOGY

This non-rechargeable Dual-Light™ flashlight with dual magnets is cETLus, ATEX, INMETRO and IECEx listed Intrinsically Safe Permissible. It uses a CREE® LED rated at 120 lumens that works in conjunction with a high-efficiency deep parabolic reflector to create a usable flashlight beam rated at 170 meters. A 120 lumens unfocused floodlight is integrated into the housing which is perfect for close-up illumination. Additionally both the flashlight and the floodlight can be turned on at the same time for maximum versatility. The dual body switches provides momentary or constant-on functionality for the flashlight and on/off functionality for the floodlight. Additionally, the integrated magnets located in the base of the handle and pocket clip, provide for almost limitless hands-free usage Power comes from 3 AA batteries (not included).

**INTRINSICALLY SAFE
PERMISSIBLE**



120 Flashlight
Lumens

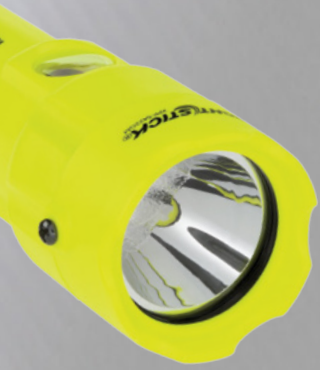
120 Floodlight
Lumens

240 Dual-Light™
Lumens

- cETLus, ATEX, IECEx, INMETRO and MSHA listed Intrinsically Safe Permissible
- Flashlight/floodlight/Dual-Light™
- Two Integrated hands-free magnets
- Beam distance rated at 170 meters



XPP 5422GM



**Intrinsically Safe Permissible
Dual-Light™ Flashlight w/Dual Magnets**

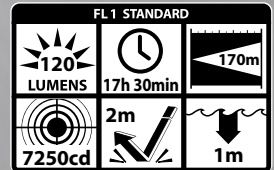
High-efficiency deep parabolic reflector

FEATURES

- Flashlight – floodlight – Dual-Light™
- CREE® LED technology – 50,000 + hours LED life
- Momentary or constant-on flashlight
- Sharp focused beam for distance illumination
- Unfocused wide-beam floodlight for close-up illumination
- Dual-Light (flashlight & floodlight at same time) for maximum versatility and user safety
- Powerful integrated magnets built into the base and clip for multiple hands-free options
- Engineered polymer housing
- Non-slip grip
- Dual body switches
- Dustproof / Waterproof
- Impact & chemical resistant
- Built-in pocket/belt clip
- Includes removable lanyard
- Requires 3 AA batteries (not included)
- Limited Lifetime Warranty

SPECIFICATIONS

- Lumens: flashlight-120, floodlight-120, dual-light-240
- Run-time: flashlight-17.5 hrs, floodlight-17.5 hrs, dual-light-4.5 hrs
- Beam distance: 170 meters
- Water / Dust rating: IP-67
- Drop rating: 2 meters
- Length: 7.2in, head diameter: 1.8in, handle diameter: 1.5 x 1.1in, weight: 6.9oz



INCLUDED

- Flashlight with built-in pocket/belt clip
- Removable lanyard

SAFETY RATING

cETLus, ATEX, IECEx, INMETRO and MSHA listed Intrinsically Safe Permissible

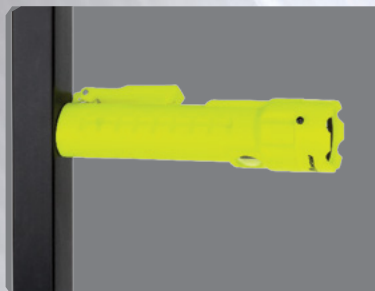


Built in pocket/belt clip with integrated magnet

Integrated magnet built into the handle

High-efficiency deep parabolic reflector

Wide-beam floodlight



Hands-free magnet in base



Hands-free magnet in pocket clip

Patent 7,738,229

Model	UPC 0 17398
XPP-5422GM	80448 6