



Rollgliss™ R550
Rescue and Descent Device

Rescue and descent,
made simple and
secure.



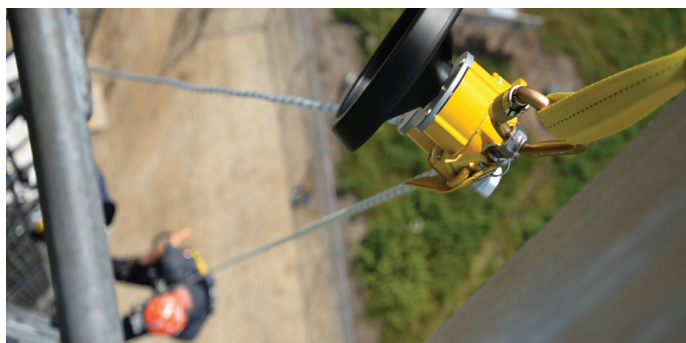
Smaller. Lighter. Easier. Faster.

A simple rescue is a safe one. That's why we created the 3M™ DBI-SALA® Rollgliss™ R550 Rescue and Descent Device. Its lightweight, compact and intuitive design offers the choice of rescue, evacuation, or the versatility of assisted rescue with lifting capabilities. From wind and cell towers, to cranes, buildings and more, count on the Rollgliss R550 for efficient, effective rescue when you need it most.



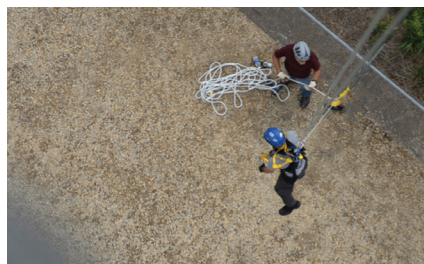
One unit. Many possibilities.

Always refer to user manual and seek proper training before attempting rescue and descent options.



Emergency escape

- Secure R550 to anchor point
- Connect the snap hook to dorsal or front D-ring of harness
- Descend safely to the ground



Assisted rescue

- Secure R550 to anchor point
- Get into position above the victim
- Attach snap hook to victim
- Raise victim to unhook their fall arrest gear
- Descend victim safely to the ground



Pick-off rescue

- Use when a victim is out of reach
- Secure R550 to anchor point and lower a second rescuer to victim
- Attach victim to rescuer
- Raise victim to unhook their fall arrest gear
- Descend both rescuer and victim to safety



Custom rescue

- The R550 can be used for custom rescues, like an angled descent
- Secure R550 to anchor point on/near ground
- Run the rope up a pulley above the victim
- Raise victim to unhook their fall arrest gear
- Lower victim to the ground, away from structure

Specifications:

Max. descent height (1 person)	1640 ft. (500 m)
Max. descent height (2 person)	575 ft. (175 m) at 620 lb. (282 kg)
Max. person	2
Max. weight	620 lb. (282 kg)
Max. descent distance	17,814 ft. (5430 m) at 310 lb. (141 kg)
Hoisting capacity (1 person)	310 lb. (141 kg)
Max. hoist height (1 person)	33 ft. (10 m)

Descent speed	2-3 ft. (0.6-0.9 m) per second
Factory inspection frequency (unsealed)	At least every 5 years
Factory inspection frequency seals	At least every 10 years
Standards	OSHA, ANSI Z359.4-2013, CSA Z259.2.3-12
Rope	3/8 in. (9.5 mm) Kermantle
Snap hooks	Plated steel
Housing materials	Aluminum alloy
Mechanical advantage	40:1

Rescue units with case

Includes edge protector, 4 ft (1.22 m) anchor sling (2), 2.5 ft. (0.76 m) anchor sling, pulley, rope grab, carabiner (3), rope bag and humidity case.

Part #	Length	Weight
3326100	100 ft. (31 m)	35.3 lbs. (16.01 kg)
3326300	300 ft. (92 m)	42.9 lbs. (19.46 kg)
3326350	350 ft. (107 m)	44.8 lbs. (20.32 kg)



9508289

Fully sealed case provides 10-year minimum storage life. External humidity indicator allows user to inspect the seal without opening case.

Rescue units

Features a Supertough® nylon rescue wheel. Includes carabiner (2), 4 ft. (1.22 m) anchor sling and rope bag.



Part #	Length	Weight
3327050	50 ft. (16 m)	11.95 lbs. (5.42 kg)
3327100	100 ft. (31 m)	13.85 lbs. (6.28 kg)
3327150	150 ft. (46 m)	15.75 lbs. (7.14 kg)
3327200	200 ft. (61 m)	17.65 lbs. (8.01 kg)
3327275	275 ft. (84 m)	20.50 lbs. (9.30 kg)
3327300	300 ft. (92 m)	21.45 lbs. (9.73 kg)
3327325	325 ft. (100 m)	22.40 lbs. (10.16 kg)
3327350	350 ft. (107 m)	23.85 lbs. (10.82 kg)
3327400	400 ft. (122 m)	25.75 lbs. (11.68 kg)
3327450	450 ft. (137 m)	27.65 lbs. (12.54 kg)
3327500	500 ft. (153 m)	29.55 lbs. (13.40 kg)

Escape units

Includes carabiner (2), 4 ft. (1.22 m) anchor sling and rope bag.



Part #	Length	Weight
3325100	100 ft. (31 m)	12.75 lbs. (5.78 kg)
3325200	200 ft. (61 m)	16.55 lbs. (7.51 kg)
3325275	275 ft. (84 m)	19.40 lbs. (8.80 kg)
3325300	300 ft. (92 m)	20.35 lbs. (9.23 kg)

Accessories

Part #	Description
9506162	Rope bag
3620005	4 ft. (1.22 m) Anchoring sling
3620004	2.5 ft. (0.76 m) Anchoring sling
3320003	Edge protector with carabiner
9504733	Pulley
AC202D	Rope grab
2104523	Rescue pole
2104529	Rescue pole snap hook adapter
3320014	Ladder bracket
9508289	Humidity case
2000112	Carabiner 11/16 in. (1.75 cm) gate
2000114	Carabiner 2-3/16 in. (5.56 cm) gate

Visit our website to learn more about our accessory products.



3M Fall Protection Business

Personal Safety Division
3833 SALA Way
Red Wing, MN 55066 USA

U.S.

Phone 800-328-6146
Email 3mfallprotection@mmm.com
Web 3M.com/FallProtection

9700978 Rev B

3M, DBI-SALA and Rollgliss are trademarks of 3M.
© 3M 2016.
Please recycle. Printed in USA.